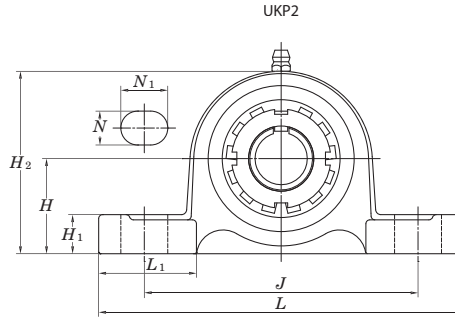
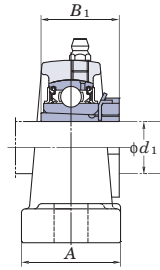


UKP
Tapered bore (with adapter)
d₁ 20 ~ (50) mm



Shaft Dia. mm inch	Dimensions											Bolt Size inch mm	Standard			
	inch mm												Unit No.	Housing No.	Bearing No.	
d ₁	H	L	A	J	N	N ₁	H ₁	H ₂	L ₁	B ₁						
20	3/4	1 7/16 36.5	5 1/2 140	1 1/2 38	4 1/8 105	1/2 13	23/32 18	5/8 16	2 3/4 70	1 1/2 38	1 3/8 35	3/8 M10	UKP205	P205	UK205	
	3/4	1 3/4 44.4	6 1/4 159	2 51	4 11/16 119	21/32 17	31/32 25	5/8 16	3 3/8 86	1 27/32 47	1 3/8 35	1/2 M14	UKPX05	PX05	UKX05	
	3/4	1 49/64 45	6 7/8 175	1 3/4 45	5 3/16 132	21/32 17	25/32 20	5/8 16	3 11/32 85	2 5/32 55	1 3/8 35	1/2 M14	UKP305	P305	UK305	
25	1	1 11/16 42.9	6 1/2 165	1 7/8 48	4 3/4 121	21/32 17	13/16 21	21/32 17	3 5/16 84	1 7/8 48	1 1/2 38	1/2 M14	UKP206	P206	UK206	
	1	1 7/8 47.6	6 7/8 175	2 1/4 57	5 127	21/32 17	31/32 25	21/32 17	3 21/32 93	2 5/32 55	1 1/2 38	1/2 M14	UKPX06	PX06	UKX06	
	1	1 31/32 50	7 3/32 180	1 31/32 50	5 1/2 140	21/32 17	25/32 20	21/32 17	3 3/4 95	2 3/32 53	1 1/2 38	1/2 M14	UKP306	P306	UK306	
30	1 1/8	1 7/8 47.6	6 9/16 167	1 7/8 48	5 127	21/32 17	13/16 21	23/32 18	3 3/4 95	1 27/32 47	1 11/16 43	1/2 M14	UKP207	P207	UK207	
	1 1/8	2 1/8 54	8 203	2 1/4 57	5 21/32 144	21/32 17	1 3/16 30	3/4 19	4 1/8 105	2 17/32 64	1 11/16 43	1/2 M14	UKPX07	PX07	UKX07	
	1 1/8	2 13/64 56	8 9/32 210	2 7/32 56	6 5/16 160	21/32 17	31/32 25	3/4 19	4 7/32 107	2 9/16 65	1 11/16 43	1/2 M14	UKP307	P307	UK307	
35	1 1/4	1 15/16 49.2	7 1/4 184	2 1/8 54	5 13/32 137	21/32 17	13/16 21	23/32 18	3 27/32 98	2 3/32 53	1 13/16 46	1/2 M14	UKP208	P208	UK208	
	1 3/8	2 5/16 58.7	8 3/4 222	2 5/8 67	6 5/32 156	25/32 20	1 1/4 32	13/16 21	4 1/2 114	2 25/32 71	1 13/16 46	5/8 M16	UKPX08	PX08	UKX08	
	1 1/4	2 23/64 60	8 21/32 220	2 3/8 60	6 11/16 170	21/32 17	1 1/16 27	3/4 19	4 21/32 118	2 9/16 65	1 13/16 46	1/2 M14	UKP308	P308	UK308	
40	1 1/2	2 1/8 54	7 15/32 190	2 1/8 54	5 3/4 146	21/32 17	13/16 21	25/32 20	4 3/16 106	2 5/32 55	1 31/32 50	1/2 M14	UKP209	P209	UK209	
	1 1/2	2 5/16 58.7	8 3/4 222	2 5/8 67	6 5/32 156	25/32 20	1 5/16 33	13/16 21	4 9/16 116	2 25/32 71	1 31/32 50	5/8 M16	UKPX09	PX09	UKX09	
	1 1/2	2 41/64 67	9 21/32 245	2 5/8 67	7 15/32 190	25/32 20	1 3/16 30	13/16 21	5 3/16 132	2 15/16 75	1 31/32 50	5/8 M16	UKP309	P309	UK309	
45	1 3/4	2 1/4 57.2	8 1/8 206	2 3/8 60	6 1/4 159	25/32 20	7/8 22	13/16 21	4 7/16 113	2 3/8 60	2 5/32 55	5/8 M16	UKP210	P210	UK210	
	1 3/4	2 1/2 63.5	9 1/2 241	2 7/8 73	6 23/32 171	25/32 20	1 13/32 36	7/8 22	4 31/32 126	3 76	2 5/32 55	5/8 M16	UKPX10	PX10	UKX10	
	1 3/4	2 61/64 75	10 13/16 275	2 15/16 75	8 11/32 212	25/32 20	1 3/8 35	15/16 24	5 13/16 148	3 15/32 88	2 5/32 55	5/8 M16	UKP310	P310	UK310	
50	1 7/8	2 1/2 63.5	8 5/8 219	2 3/8 60	6 23/32 171	25/32 20	7/8 22	29/32 23	4 29/32 125	2 9/16 65	2 5/16 59	5/8 M16	UKP211	P211	UK211	
	2	2 3/4 69.8	10 1/4 260	3 1/8 79	7 1/4 184	31/32 25	1 13/32 36	1 3/32 28	5 15/32 139	3 9/32 83	2 5/16 59	3/4 M20	UKPX11	PX11	UKX11	
	2															

Remarks 1. In Part No. of unit and units with covers, fitting codes follow bore diameter numbers. (See Table 10.5 in P.62.)
 2. Part No. of applicable grease fittings are shown below.
 A-1/4-28UNF 205~210, X05~X09, 305~308
 A-R1/8..... 211~218, X10~X20, 309~328