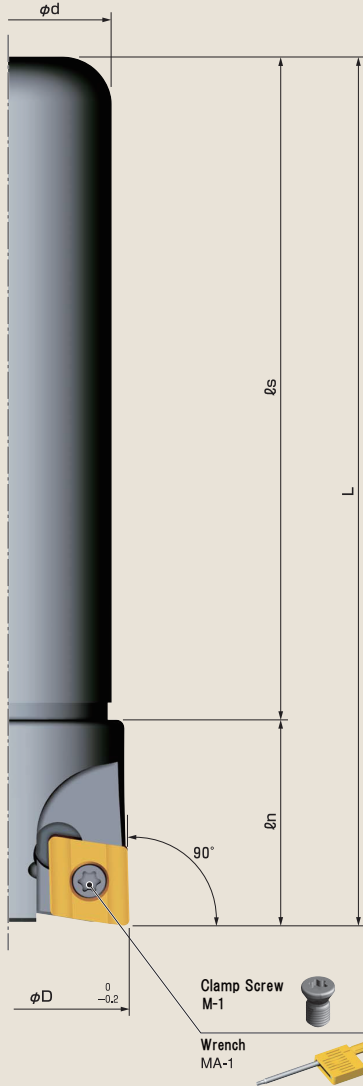
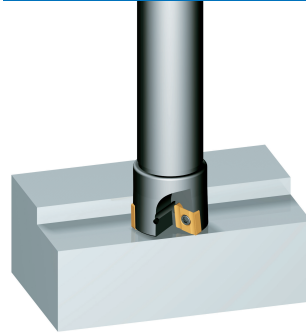


**Economical Milling Cutters !**  
Selectable R0.2, R0.4, and R0.8 nose insert and usable 4-corners



Shoulder Milling (NT type)



**Shurillin**

The high feed by multi-blade  
Capable of high-speed cutting!



### Body

Model. No.	blades	Dimensions (mm)					Weight (g)
		φD	φd	L	ℓs	ℓn	
NC2-1620	2	20	16	100	80	20	152
NC3-2530	3	30	25	105	80	25	394
NC4-3240	4	40	32	105	80	25	656
NC5-3250	5	50	32	105	80	25	752

※ Insert is not equipped as standard accessories. Please order separately  
 ※ Clamp screw, and wrench are supplied as standard accessories

### Cutting Conditions

Material	Material Model Feed per blade (fz)	NK1010	NK2020	NK3030	ZB01H
		Cutting speed (m / min)			
General Steel	0.08~0.2		100~200	100~200	200~250
Alloy Steel	0.08~0.2		100~200	100~200	200~250
Stainless Steel	0.08~0.2		100~150	100~150	
Aluminum, Resin,	0.08~0.3	150~400			
Castings	0.08~0.2		100~200	100~200	

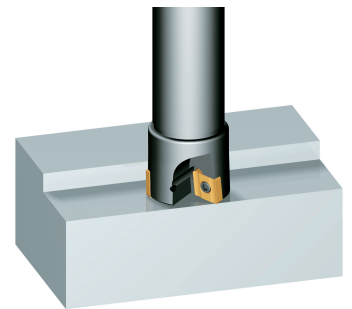
● According to workpiece shape, clamp condition and cutting volume, the cutting condition will have to be adjusted.  
 ● You have been to the workpiece by recommended insert.

### [Shoulder Milling (NT)]

- Body : NC3-2530
- Insert : C32GUR-0.8R NK3030
- Material.....SUS304
- Work length.....300mm
- Rotation Speed...2,000r.p.m
- Feed (X-axis)....800mm/min
- Cutting Depth....1mm

### Result

**Good!**  
No secondary burrs and no chattering process



### Insert

Fig.	Model.No.	Material	Blade Shape	Coating	Usable corner	Quantity per box
<p>(C32GUR) R0.2/R0.4/R0.8</p>	C32GUR-0.2R NK2020	Carbide M20	Honing edge	None	4	12
	C32GUR-0.4R NK2020	Carbide M20	Honing edge	None	4	12
	C32GUR-0.8R NK2020	Carbide M20	Honing edge	None	4	12
	C32GUR-0.2R NK1010	Carbide K10	Sharp edge	None	4	12
	C32GUR-0.2R NK3030	Carbide M20	Honing edge	TiN	4	12
	C32GUR-0.4R NK3030	Carbide M20	Honing edge	TiN	4	12
	C32GUR-0.8R NK3030	Carbide M20	Honing edge	TiN	4	12
<p>(C32MOR) R0.8</p>	C32MOR-0.8R ZB01H	Cermet	Honing edge	None	4	12