

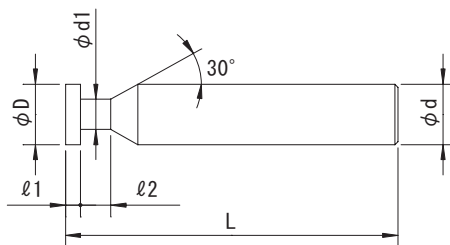
超硬

# CSKC

切削条件表

P239

超硬ソリッドキーシードカッター Carbide Solid Keyseat Cutter



公差 (Tolerance)	D: $\begin{matrix} 0 \\ -0.05 \end{matrix}$	ℓ1: $\begin{matrix} 0 \\ -0.035 \end{matrix}$	d: $\begin{matrix} 0 \\ -0.01 \end{matrix}$
----------------	---	---	---

右刃ストレート K10

Straight Flute Micro Grain Carbide(K10)

刃径 (ΦD)	刃厚 (ℓ1)	首径 (d1)	首長 (ℓ2)	全長 (L)	シャンク径 (Φd)	刃数 (N)
Dia.	Cut Width	Neck Dia.	Neck Length	Overall Length	Shank Dia.	Number of Flutes
2	0.3	1.2	3.5	40	3	4
	0.4	1.2	3.5	40	3	4
	0.5	1.2	3.5	40	3	4
	0.6	1.2	3.5	40	3	4
	0.7	1.2	3.5	40	3	4
	0.8	1.2	3.5	40	3	4
	0.9	1.2	3.5	40	3	4
	1	1.2	3.5	40	3	4
	1.1	1.2	3.5	40	3	4
1.2	1.2	3.5	40	3	4	
2.5	0.3	1.25	3.5	40	3	4
	0.4	1.25	3.5	40	3	4
	0.5	1.25	3.5	40	3	4
	0.6	1.25	3.5	40	3	4
	0.7	1.25	3.5	40	3	4
	0.8	1.25	3.5	40	3	4
	0.9	1.25	3.5	40	3	4
	1	1.25	3.5	40	3	4
	1.1	1.25	3.5	40	3	4
1.2	1.25	3.5	40	3	4	
3	0.3	1.5	3.5	50	3	4
	0.4	1.5	3.5	50	3	4
	0.5	1.5	3.5	50	3	4
	0.6	1.5	3.5	50	3	4
	0.7	1.5	3.5	50	3	4
	0.8	1.5	3.5	50	3	4
	0.9	1.5	3.5	50	3	4
	1	1.5	3.5	50	3	4
	1.1	1.5	3.5	50	3	4
	1.2	1.5	3.5	50	3	4
	1.3	1.5	3.5	50	3	4
	1.4	1.5	3.5	50	3	4
	1.5	1.5	3.5	50	3	4
	4	0.3	2	3.5	50	3
0.4		2	3.5	50	3	6
0.5		2	3.5	50	3	6
0.6		2	3.5	50	3	6
0.7		2	3.5	50	3	6
0.8		2	3.5	50	3	6
0.9		2	3.5	50	3	6
1		2	3.5	50	3	6
1.1		2	3.5	50	3	6
1.2		2	3.5	50	3	6
1.3		2	3.5	50	3	6
1.4		2	3.5	50	3	6
1.5		2	3.5	50	3	6

刃径 (ΦD)	刃厚 (ℓ1)	首径 (d1)	首長 (ℓ2)	全長 (L)	シャンク径 (Φd)	刃数 (N)
Dia.	Cut Width	Neck Dia.	Neck Length	Overall Length	Shank Dia.	Number of Flutes
4	1.6	2	3.5	50	3	6
	1.7	2	3.5	50	3	6
	1.8	2	3.5	50	3	6
	1.9	2	3.5	50	3	6
	2	2	3.5	50	3	6
	5	0.3	2.5	5.2	50	6
0.4		2.5	5.1	50	6	8
0.5		2.5	5	50	6	8
0.6		2.5	4.9	50	6	8
0.7		2.5	4.8	50	6	8
0.8		2.5	4.7	50	6	8
0.9		2.5	4.6	50	6	8
1		2.5	4.5	50	6	8
1.1		2.5	4.4	50	6	8
1.2		2.5	4.3	50	6	8
1.3		2.5	4.2	50	6	8
1.4		2.5	4.1	50	6	8
1.5		2.5	4	50	6	8
1.6		2.5	4	50	6	8
1.7	2.5	4	50	6	8	
6	1.8	2.5	4	50	6	8
	1.9	2.5	4	50	6	8
	2	2.5	4	50	6	8
	2.5	2.5	4	50	6	8
	0.3	3	5.2	50	6	8
	0.4	3	5.1	50	6	8
	0.5	3	5	50	6	8
	0.6	3	4.9	50	6	8
	0.7	3	4.8	50	6	8
	0.8	3	4.7	50	6	8
	0.9	3	4.6	50	6	8
	1	3	4.5	50	6	8
	1.1	3	4.4	50	6	8
	1.2	3	4.3	50	6	8
1.3	3	4.2	50	6	8	
1.4	3	4.1	50	6	8	
1.5	3	4	50	6	8	
1.6	3	4	50	6	8	
1.7	3	4	50	6	8	
1.8	3	4	50	6	8	
1.9	3	4	50	6	8	
2	3	4	50	6	8	
2.5	3	4	50	6	8	
3.0	3	4	50	6	8	