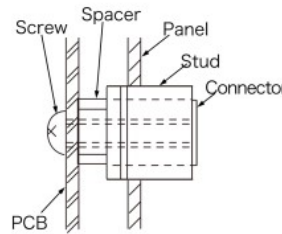
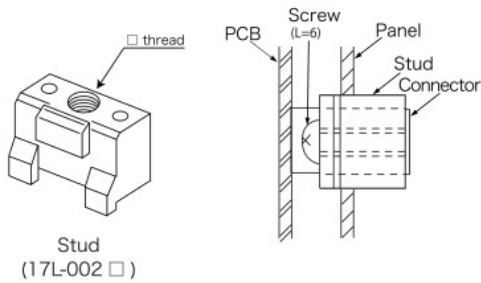


▶ Mounting on Panel and PCB

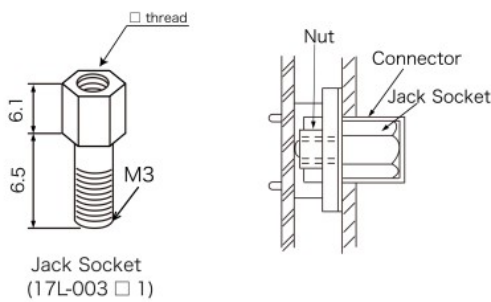
Panel Mounting Dimensions



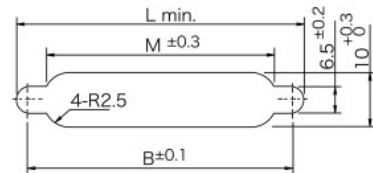
Type 1



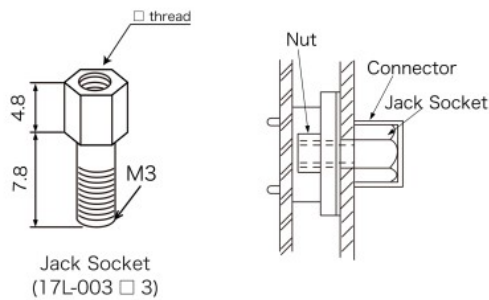
※ Connector can not be fastened on the panel.



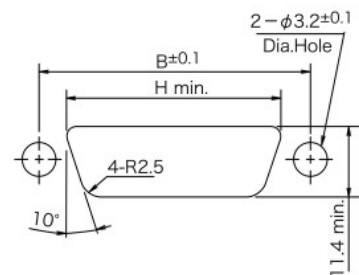
Type 2



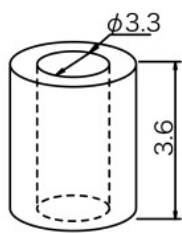
※ Connector can not be fastened on the panel.



Type 3 Rear Mounting



※ Connector can be fastened on the panel.
(Panel Thickness : 0.8 ~ 1.3)



Spacer
(57D-149-6A)

- Thread Size
- A : M2.6×0.45 (Standard)
- B : M3×0.5
- C : #4-40UNC

Number of Contact	B	H	K	L	M
09	24.99	20.5	34.09	31.0	18.5
15	33.32	28.8	42.42	39.3	26.8
25	47.04	42.5	56.14	53.2	40.7
37	63.50	59.1	72.60	69.5	57.0

Note: We do not provide pan-head screws and nuts for fixing the accessories.
Please prepare them at your side.

© Specifications and/or dimensions in this catalog are subject to change without notice.
Your checking the latest specifications with our drawings would be highly appreciated.