

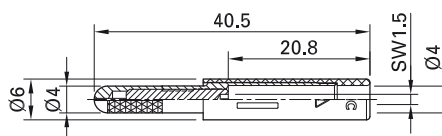
Screw-clamping adapter A-SLK4...

Adapter, made of brass can be screw-mounted into Ø 4 mm sockets. The expandable Ø 4 mm plug of this adapter can be locked

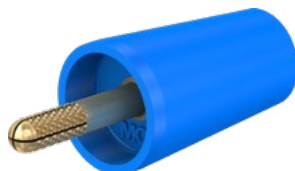
into the socket by tightening the grub screw. Assembled, the adapter offers complete touch-proof protection. Ø 4 mm rigid

socket in insulator accepting spring-loaded Ø 4 mm plugs with rigid insulating sleeve.

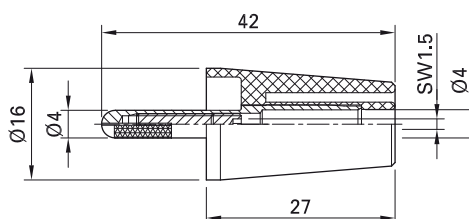
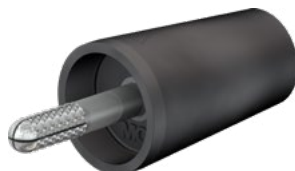
A-SLK4-S



A-SLK4



A-SLK4-N



| Order No. | Type | Rated voltage/current | User information | | *Standard colors |
|-----------|----------|-----------------------|------------------|----|----------------------------------|
| 24.0163-* | A-SLK4-S | 1000 V, CAT II / 25 A | i011 | Ni | 21 22 23 24 |
| 24.0160-* | A-SLK4 | 1000 V, CAT II / 32 A | i010 | Au | 20 21 22 23 24 25 26 27 28 29 |
| 24.0161-* | A-SLK4-N | 1000 V, CAT II / 32 A | i010 | Ni | 20 21 22 23 24 25 26 27 28 29 |



Optional colors 25 29

Further information, page 6



Hexagon wrench STS1,5: page 171



User information i010, i011

www.staubli.com/electrical



Assembly instructions MA115

www.staubli.com/electrical