

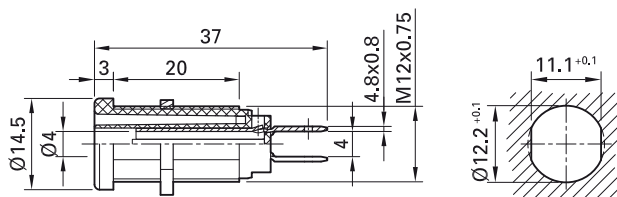
## Panel-mount socket XEB-1...

Insulated, rigid, Ø 4 mm, accepting spring-loaded Ø 4 mm plugs with rigid insulating sleeve. Brass sheet. The socket consists of two insulated, semi-circular

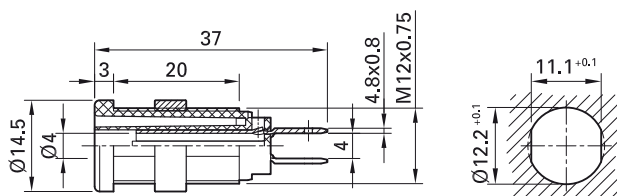
contacts, which are connected to each other when a plug is inserted (switch function). The socket is screwed into pre-drilled panels of plastic, metal, etc.

**Connection: 2 × Flat connecting tab 4.8 mm × 0.8 mm.**

### XEB-1R



### XEB-1RR



Order No.	Type	Rated voltage/current	Connection		*Standard colors										
66.9131-*	XEB-1R	1000 V, CAT IV / 20 A	2 × Flat connecting tab 4.8 mm × 0.8 mm	Ni c  us	<table border="1"> <tr> <td>20</td> <td>21</td> <td>22</td> <td>23</td> <td>24</td> </tr> <tr> <td>25</td> <td>26</td> <td></td> <td></td> <td></td> </tr> </table>	20	21	22	23	24	25	26			
20	21	22	23	24											
25	26														
66.9850-*	XEB-1RR	1000 V, CAT IV / 20 A	2 × Flat connecting tab 4.8 mm × 0.8 mm	Ni c  us	<table border="1"> <tr> <td>20</td> <td>21</td> <td>22</td> <td>23</td> <td>24</td> </tr> <tr> <td>26</td> <td>29</td> <td></td> <td></td> <td></td> </tr> </table>	20	21	22	23	24	26	29			
20	21	22	23	24											
26	29														

### Supplied assembly material

Page 166	GEW.12-MUTTER	Hexagon nut for XEB-1R
Page 167	MUR/M12x0,75	Round nut for XEB-1RR



Optional colors 25 29

Further information, page 6



Flat connecting receptacles, page 170

Tube spanners SS2, SS425, page 170



Assembly instructions MAH506, MAH509

[www.staubli.com/electrical](http://www.staubli.com/electrical)