

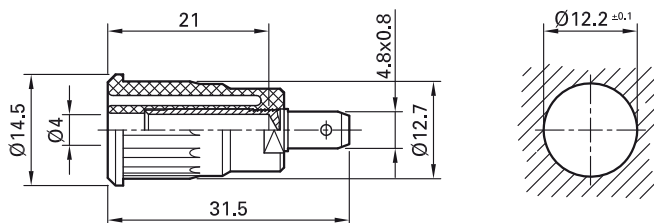
## Press-in socket SEB4-F...

Insulated, rigid, Ø 4 mm, accepting spring-loaded Ø 4 mm plugs with rigid insulating sleeve. Machined brass. The socket

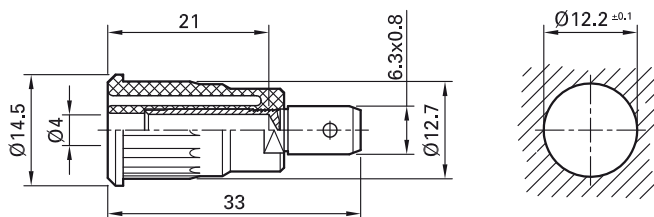
is pressed into pre-drilled panels of plastic, metal, etc.

**Connection: Flat connecting tab.**

### SEB4-F...



### SEB4-F6,3...



Order No.	Type	Rated voltage/current	Connection		*Standard colors
23.3120-*	SEB4-F	1000 V, CAT III / 24 A	Flat connecting tab 4.8 mm × 0.8 mm	Au c  US	20 21 22 23 24 25 27 28
49.7079-*	SEB4-F/N	1000 V, CAT III / 24 A	Flat connecting tab 4.8 mm × 0.8 mm	Ni c  US	20 21 22 23 24 25 27 28 29
23.3150-*	SEB4-F6,3	1000 V, CAT III / 32 A	Flat connecting tab 6.3 mm × 0.8 mm	Au c  US	20 21 22 23 24 25 27 28
49.7073-*	SEB4-F6,3/N	1000 V, CAT III / 32 A	Flat connecting tab 6.3 mm × 0.8 mm	Ni c  US	20 21 22 23 24 25 27 28 29



Optional colors 29

Further information, page 6



**Flat connecting receptacles FSH...,  
page 170**

**Press-in tool MB4-S, page 171**



**Assembly instructions MA104**

[www.staubli.com/electrical](http://www.staubli.com/electrical)