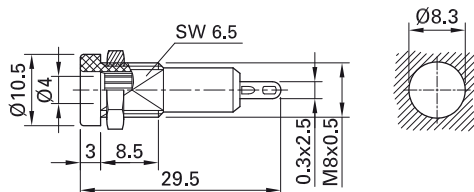


Panel-mount socket LB-I4R-B

Insulated, Ø 4 mm, rigid. Rolled brass sheet.
The socket can be screw-mounted in pre-drilled panels.

Solder connection.



Order No.	Type	Rated voltage/current		*Standard colors
23.0450-*	LB-I4R-B	30 VAC / 25 A 60 VDC / 25 A	Ni	21 22 23 24 25 29

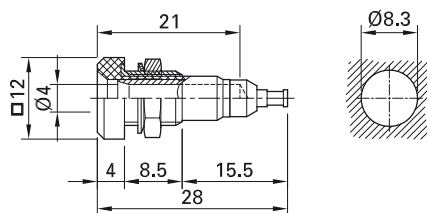
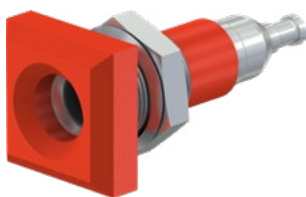
Component parts

23.8111-*	BI-LB-I4R-B	Socket without nut
Page 166	MU/M8x0,5	Hexagonal Nuts

Panel-mount socket LB-I4Q

Insulated, Ø 4 mm, rigid. Machined brass.
Metal thread jacket on the insulation. The socket can be screw-mounted in predrilled panels.

Solder connection.



Optional colors 23 24 25 26 29

Further information, page 6

Order No.	Type	Rated voltage/current		*Standard colors
23.0120-*	LB-I4Q	30 VAC / 25 A 60 VDC / 25 A	Opt	21 22

Component parts

23.6222-*	BI-LB-I4Q	Socket without nut
Page 166	MU/M8x0,5	Hexagonal Nuts
Page 167	SP4	Washer