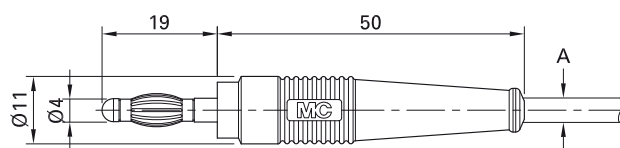


## Plug L-41...

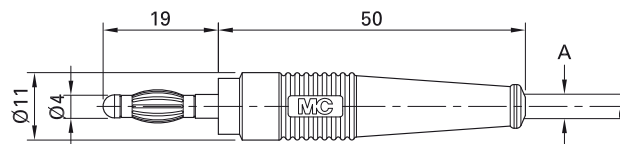
In-line, Ø 4 mm, with spring-loaded MULTILAM for self-assembly of test leads.  
Type L-41Q with Ø 4 mm lateral hole for additional test connection.

**Solder connection.**

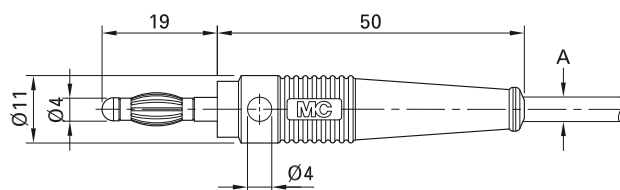
**L-41**



**L-41/A**



**L-41Q**



Order No.	Type	Rated voltage/current	Cable (A)		*Standard colors
64.9200-*	L-41	30 VAC / 32 A 60 VDC / 32 A	max. Ø 3.9 mm      2.5 mm <sup>2</sup>	Ni	21 22 23 24 25
64.1020-*	L-41/A	30 VAC / 32 A 60 VDC / 32 A	max. Ø 3.9 mm      2.5 mm <sup>2</sup>	Au	21 22 23 24 25 29
64.9199-*	L-41Q	30 VAC / 32 A 60 VDC / 32 A	max. Ø 3.9 mm      2.5 mm <sup>2</sup>	Ni	21 22 23 24 25 26 27 29



Optional colors 26 27 28

Further information, page 6