

## Calipers·Micrometers

### FLEXIBLE HOLDER

JP

Order No.	Model No.	Magnet Force (N)	Weight (kg)	JPY	Ref.No
2-9541-01	MPV-MF30	784	1.4	¥ 29,200	070875
2-9541-02	MPV-CL30	1000	2.7	¥ 40,200	070875
2-9541-03	MPV-F50A			¥ 73,000	070875

#### Feature

- Provided with ON/OFF switchable magnet base for easy installation and removal.
- MPV - MF30 Model : Allows the installation of shaft of  $\phi 6\text{mm}$  and  $\phi 8\text{mm}$  other than main clammer Allows you to change parts in the end when used with M6 male screw in the arm end and M5 male screw in the pole end.
- MPV - CL30 Model : Provided with the clammer which opens 28mm at max. and moves up and down in the range of approx.90mm.
- MPV - F50A Model : Equipped with the nylon workpiece holding plate to fix a workpiece without plain surface. Since the vice part can be tilted flexibly, can be fixed according to the shape and processing direction of the workpiece.



MPV-MF30

MPV-F50A

MPV-CL30

### MAGNET HOLDER STAND

CN

Order No.	Model No.	Magnet force (N)	Mounting threaded hole	Dimensions (mm)	JPY	Ref.No
2-304-01	MB-PB	800	M8×1.25 screw depth 7	50× 58.5×55	¥ 4,000	070875
2-304-02	MB-PR	1000	depth 7	50× 73 ×55	¥ 7,140	070875
2-304-03	MB-PRW	600	2-M8×1.25 screw depth 7		¥ 15,700	070875
2-304-04	MB-PL	1300	M10×1.25 screw depth 7	50×117 ×55	¥ 12,200	070875
2-304-05	MB-PG	1500	M8×1.25 screw depth 7	50×120 ×52	¥ 14,200	070875
2-304-06	MB-PH	1250	M12×1.75 screw depth 11	70× 70 ×80	¥ 14,200	070875
2-304-07	MB-PM	600	M6×screw depth 6	40× 40 ×40	¥ 5,430	070875
2-304-08	MB-PS	300	M5×screw depth 4	30× 34 ×35	¥ 4,600	070875
2-304-09	MB-0404	200	M6 screw depth 6 (center) 4-M3 screw depth 6 (four corners)	40× 35 ×40	¥ 8,100	070875

#### Specification

- MB-PRW : Waterproof Structure
- MB-0404 : Drip-proof · Oil Resistant Structure

#### Feature

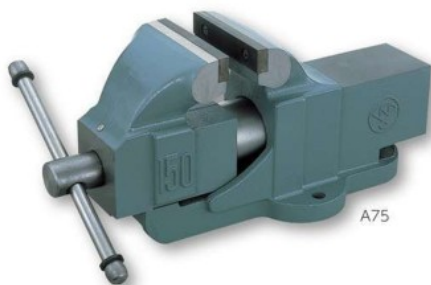
- Opposite Side (rear side) of switching lever can also be adsorbed (excluding MB-PH · PM · PS).



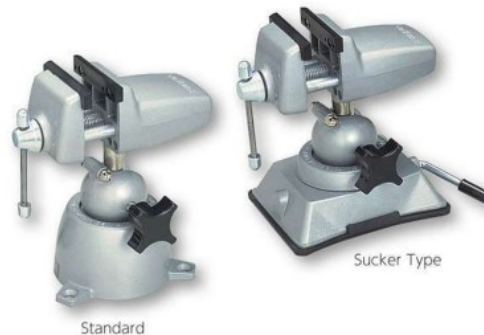
MB-PB

MB-PRW

MB-0404



A75



Standard

Sucker Type

### JIS VISES

JP

Order No.	Model No.	Caliber	Mouth Opening	Mouth Depth	Weight	JPY	Ref.No
1-8282-01	A75	76mm	75mm	75mm	10kg	¥ 26,700	070860
1-8282-02	A100	102mm	100mm	84mm	18kg	¥ 37,300	070860
1-8282-03	A125	127mm	125mm	95mm	26kg	¥ 52,500	070860
1-8282-04	A150	153mm	150mm	100mm	36kg	¥ 67,500	070860

#### Feature

- Stopper balls of both ends are hetting processed, and does not fall out.
- Ductile cast iron is used for female screw and it is hard to damage.

### VISES

Order No.	Specifications	Dimensions (mm)	Weight (kg)	JPY	Ref.No
8-074-01	Standard	130×110×167	approx. 1.2	¥ 15,100	070860
8-074-02	Sucker Type		approx. 1.3	¥ 21,200	070860

#### Feature

- Fixable at flexible angle.
- Standard type is to fix with countersunk screw.
- Vacuum base type can be used on the surface without and not sandy.

#### Specification

- Material : Aluminum Die-casting
- Opening-and-closing Width : 60mm

1 Laboratory Equipment

2 Measuring Equipment

3 Laboratory Furniture

4 Life Science and Analysis

5 Bottles and Containers

6 Laboratory Related Tools and Fixtures

7 Cleaning and Sterilization

8 Safety Protection Supplies

9 Clean Environment Equipment

A Balances

B Thermometers and Hygrometers

C Data-Loggers and Recorders

D Water and Soil Analysis

E Air and Gas Analysis

F Natural Environment Analysis

G Electrical Measuring Equipment

H Physical Property Measuring Equipment

I Microscopes

J Fiber Scopes and Loupes

K Lasers / Optical Equipment

L Measuring Tools