

Stereo/Metal Microscopes

# New series of microscopes appears!

## EC PLAN LENS BIOLOGICAL MICROSCOPE

**NEW** AS ONE ORIGINAL

Adopts high-resolution EC plan achromatic lenses based on CCIS® optical system.

Since operation system is placed in low position, possible to operate with hand placed on table.

**POINT**  
Use left knob to move stage and take notes at the same time.

**POINT**  
Ergonomically designed lens tube allows you to comfortably use microscope for extended periods of time.

**POINT**  
New EC plan lens

CN

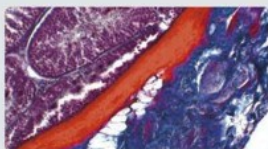
Order No.	Model No.	Total Magnification	Specification	JPY	Ref.No
3-6692-01	MP38B	40~1000×	Binocular	¥ 148,000	062770
3-6692-02	MP38T		Trinocular	¥ 159,000	062770
3-6692-11	CCM05X	0.5×	C Mount Adapter 1/2"	¥ 19,000	062780
3-6692-12	CCM065X	0.65×	C Mount Adapter 2/3"	¥ 19,000	062780
3-6692-13	CCM1X	1×	C Mount Adapter without Lens	¥ 19,000	062780

**Feature**

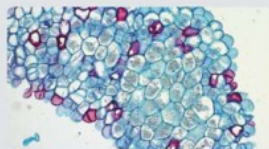
- High-performance biological microscope superior in durability, designed for researches and practices.
- Adopts high-resolution EC plan achromatic lenses based on CCIS® optical system, providing bright and vivid high-contrast image.
- Adopts full-scale Koehler illumination system, reducing heat damage to samples.
- Ergonomically designed lens tube reduces fatigue.
- Stage is superior in chemical resistance and durability.

**Specification**

- Optical System : Infinity Color Correction (CCIS®)
- Eyepiece : 10× (field No.20) ● Focusing : Uniaxial Coarse and Fine Focusing
- Object Lens : EC Plan Achromatic Lens 4× /N.A.0.1, 10× /N.A.0.25 · 540× /N.A.0.65, 5100× /N.A.1.25 (oil) ● Lens Tube Type : Inclination Angle 30°
- Interpupillary Range : 55~75mm ● XY Stage : Movement Distance / Left/Right 76mm, Front/Back 50mm, Holds Slide × 2 ● Light Power Supply : AC100~240V 50/60Hz ● Condenser : Abbe Type for Koehler Illumination N.A.1.25 (oil immersion) /0.90 (dry) ● Light : 3W LED Koehler Illumination ● Dimensions : Body/210×410×415mm, Stage/175×140mm ● Weight : approx.7.2kg



40× Shooting with Observation Image PCM300(3-6691-01) Refer to P.628



4× Shooting with Observation Image PCM500(3-6691-02) Refer to P.628

**POINT**  
Microscope features full-scale Köhler illumination system reducing heat damage to samples.

**POINT**  
Coating applied to body ensures durability during routine work.



High contrast and low aberration

Objective lens EC plan achromat lenses

	N.A	WD(mm)
4×	0.1	15.9
10×	0.25	17.4
40×	0.65	0.5
100×	1.25	0.15

## LED PLAN LENS BIOLOGICAL MICROSCOPE

**NEW** AS ONE ORIGINAL

Ergonomic design excellent in usability and portability.

Possible to recharged 500 times with nickel hydrogen battery. Available for 20,000 hours. When charging is completed, charging stops automatically.

CN

Order No.	Model No.	Total Magnification	Specification	JPY	Ref.No
3-6689-01	LRM18B	40~1000×	Binocular	¥ 89,000	062770
3-6689-02	LRM18T		Trinocular	¥ 110,000	062770

\*Select optimum C mount adapter from 3-6692-11~13.

**Feature**

- Ergonomic design excellent in usability and portability.
- Adopts plan achromatic object lenses, providing bright and vivid high-contrast image. ● Also possible to used cordlessly by charging integrated battery.

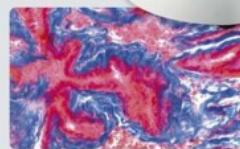
**Specification**

- Eyepiece : 10× (field No.18)
- Object Lens : 4× /N.A.0.1, 10× /N.A.0.25, 540× /N.A.0.65, 5100× /N.A.1.25 (oil)
- Lens Tube Type : Inclination Angle 45° ● Interpupillary Range : 54~76mm
- Light Power Source : AC100~240V 50/60Hz
- Condenser : Abbe Type (N.A.1.25) ● Light Power Source : LED Light
- Dimensions : Body/235×151×362mm, Stage/143×120mm
- Weight : approx.5kg

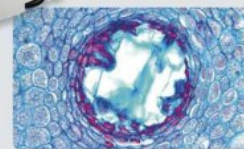
**POINT**  
Mechanism features exceptionally durable ball bearings.

**POINT**  
Design of handle allows you to carry microscope without effort.

**POINT**  
Rechargeable battery enables you to use microscope even with no power source available.



20× Shooting with Observation Image PCM300(3-6691-01) Refer to P.628



4× Shooting with Observation Image PCM500(3-6691-02) Refer to P.628