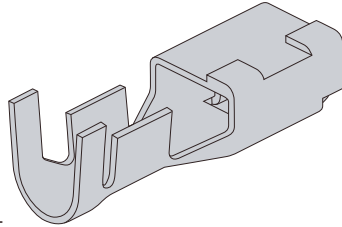
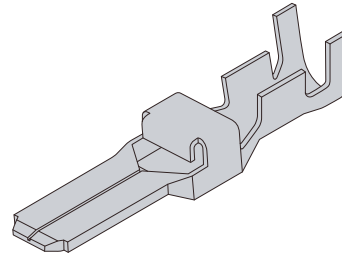


D-5000 Series Contact

- Crimp type



Receptacle Contact
(used in Receptacle Housing)



Tab Contact
(used in Tab Housing)

- gold-plated, silver-plated type

Applicable Wiring Range		Insulation Wire outer diameter mm	Wire Range Mark	Contact Part Number			Tool Part Number		
				Receptacle Contact	Tab Contact	Sequential Tab Contact	Mini-Applicator	Hand Tool	
AWG	mm ²								
20	0.50	1.8-2.83	SS	Strip Form	1318985-2 1318985-3 1318985-6	-	-	1528106-2	-
				Loose Form	1318986-2 1318986-3 1318986-6	-	-	-	91596-1
16	1.25	2.35-3.23	S	Strip Form	179955-2 179955-3	917802-2 917802-3	84696-1	1366659-2	-
				Loose Form	316040-2 316040-3 316040-6	917804-2 917804-3 917804-6	2013594-1	-	234170-1
12	3.50	4-5.2	M	Strip Form	179956-2 179956-3	917803-2 917803-3	84695-1	1366660-2	-
				Loose Form	316041-2 316041-3 316041-6	917805-2 917805-3 917805-6	2013593-1	-	234171-1
8	8.00	4.9-7.8	L	Strip Form	1318696-2	-	-	1366658-3	-
				Loose Form	1318697-2	1747443-6	-	-	1366044-1

Note:

The part number suffix is the code for plating.

- 1: 0.2µm thick gold plated
- 2: 0.38 µm thick gold plated
- 3: 0.76 µm thick gold plated
- 6: 2.54 µm thick gold plated

Minimum order quantity is provided for each product.
When ordering, specify your requirements by multiplying the quantity set for each.
Mini-Applicator is for use on Automachine.
Strip Form contacts are used with Mini-Applicator and Loose-Piece contacts are with hand tools.

- For more information please refer to P.109
If you have any questions please contact AT tooling Sales Department (044 - 900 - 5027)
- Electro-hydraulic tool PN2155369 -1 for use with 16 AWG to 8 AWG wire

The receptacle contact can be used in all receptacle housings, the tab contact can be used in all tab housings

NOTE: All products are RoHS compliant On selection. You need to confirm LOT and lead time

D-5000 Series