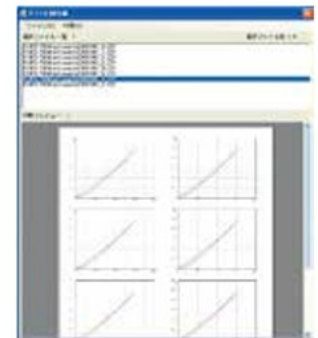
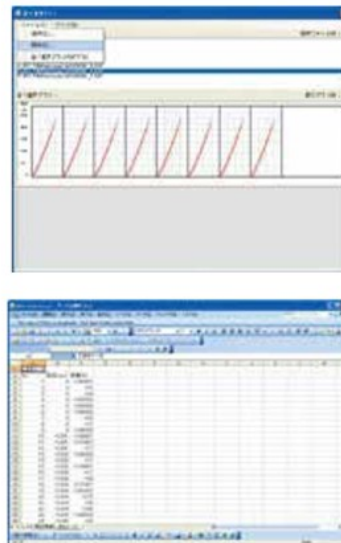
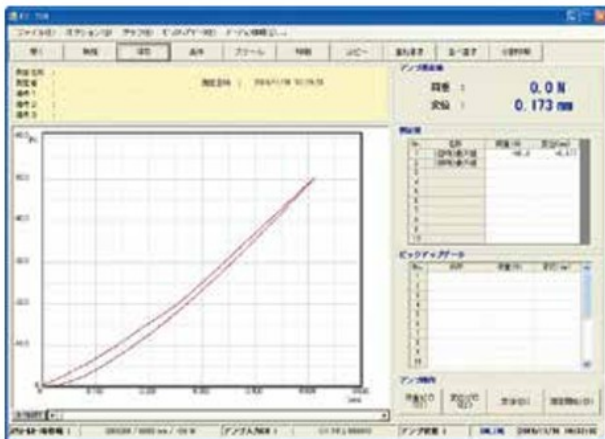


Standard Softwares

FS-700 (MODEL-1016 Series Basic Dedicated Software)



This is data processing application software dedicated to MODEL-1016 series amplifiers. Real-time data output and waveform drawing at high-speed sampling is possible. For tests, almost all conditions of MODEL-1016 series can be set on a PC. Not only continuous testing, but the X.LS format and CSV format to directly save data to Excel are possible. The available print styles include overlapped, shifted and split print. (The PC and Excel are to be provided by the user.)

Recommended Environment

- Japanese Windows7or8
- Memory: 1G bytes or more
- 38400bps serial port: 1
- CD-ROM drive for program installation: 1
- Internet Explorer 5.0 or later
- English OS accepted
- MODEL-1016 Series Basic Version only

FSN-500 (V-103/V-103A Switch Feeling Dedicated Software)



Time	Force	Displacement	Time	Force	Displacement	Time	Force	Displacement
0.000	0.000	0.000	0.000	0.000	0.000	0.000	0.000	0.000
0.001	0.001	0.001	0.001	0.001	0.001	0.001	0.001	0.001
0.002	0.002	0.002	0.002	0.002	0.002	0.002	0.002	0.002
0.003	0.003	0.003	0.003	0.003	0.003	0.003	0.003	0.003
0.004	0.004	0.004	0.004	0.004	0.004	0.004	0.004	0.004
0.005	0.005	0.005	0.005	0.005	0.005	0.005	0.005	0.005
0.006	0.006	0.006	0.006	0.006	0.006	0.006	0.006	0.006
0.007	0.007	0.007	0.007	0.007	0.007	0.007	0.007	0.007
0.008	0.008	0.008	0.008	0.008	0.008	0.008	0.008	0.008
0.009	0.009	0.009	0.009	0.009	0.009	0.009	0.009	0.009
0.010	0.010	0.010	0.010	0.010	0.010	0.010	0.010	0.010

This is application software dedicated to V-103 and V-103A switch feeling. When the optional ROM card V-103 or CF card V-103A is used, measured data/graph data can be loaded to a PC and processed, saved and printed. (The PC and Excel are to be provided by the user.)

Recommended Environment

- Japanese Windows7or8
- Memory: 1G bytes or more
- 38400bps serial port: 1
- CD-ROM drive for program installation: 1
- Internet Explorer 5.0 or later
- English OS accepted